

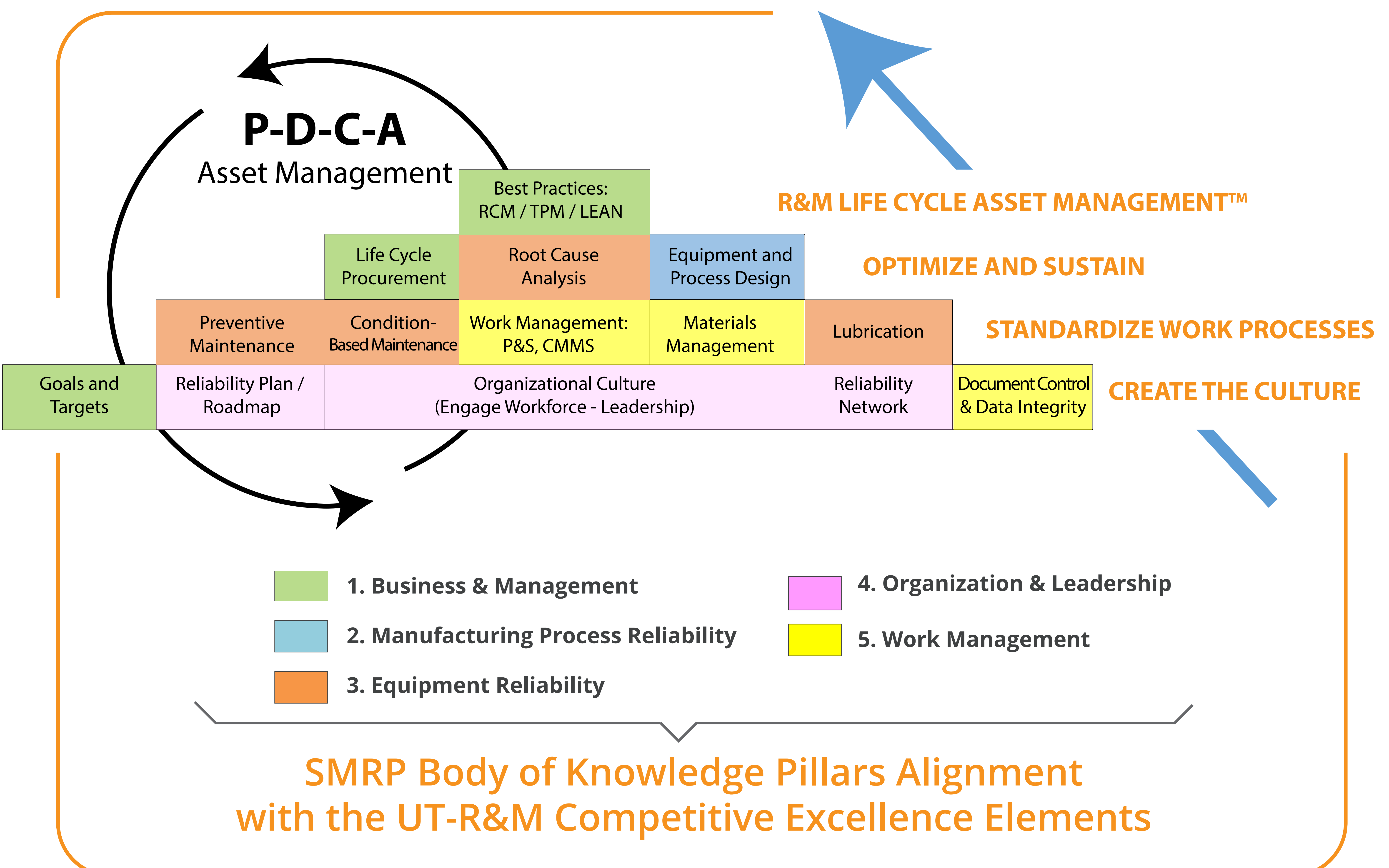
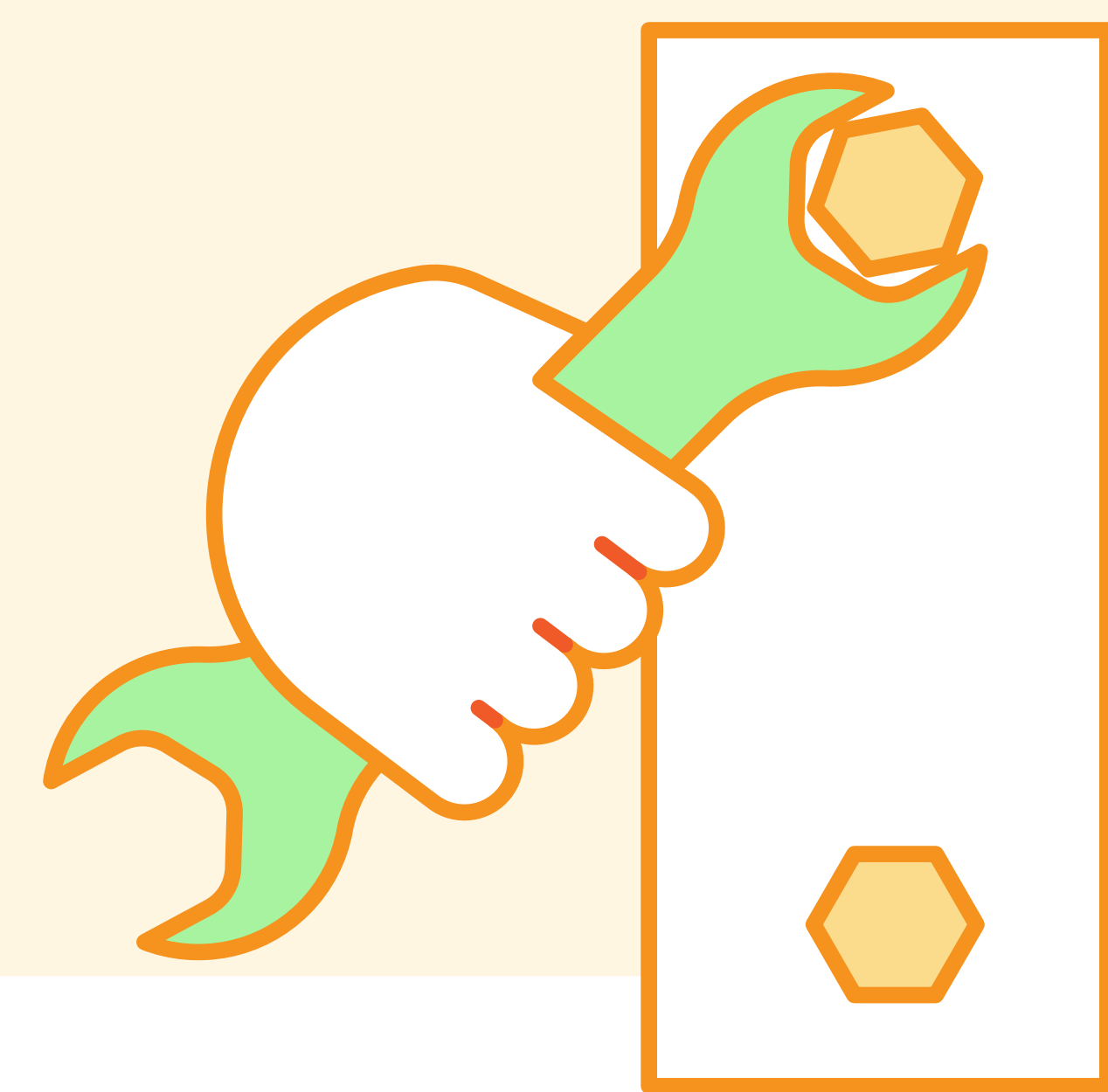


# UT-RMC Reliability & Maintainability Competitive Excellence Model

The competitive excellence model below was developed by the University of Tennessee's Reliability & Maintainability Center (UT-RMC) and depicts the key elements for improving reliability & maintainability at your organization. It is used for assessments and generating a roadmap for implementation.

The idea is to begin building/improving layer-by-layer, starting with the foundational elements, as shown in the image. So, in order, you'd:

1. Create the culture
2. Create standardized work processes
3. Optimize and sustain
4. Implement reliability & maintainability life cycle asset management™
5. Sustain with continuous improvement efforts (PDCA cycle) for asset management



## Want to learn more?

Listen to the recorded, on-demand webinar in which Dr. Klaus Blache of UT-RMC discusses this model with Jeff Dalto of Vector Solutions: <http://bit.ly/RMCEM>

**DID YOU KNOW?**



- UT-RMC and Vector Solutions partner to offer a Reliability & Maintainability Implementation Certification (RMIC®). Learn more here: <http://bit.ly/UTRMCVS>
- For more about UT-RMC: <https://rmc.utk.edu/>
- For more about Vector Solutions: [www.VectorSolutions.com](http://www.VectorSolutions.com)